

Uniclass L7522	EPIC L22
CI/SfB (56.84)	X



Wireless Heating Systems

## ECOLEC SINGLE ZONE WIRELESS CONTROLLER RANGE

Lot 20  
compliant



You will require a wireless Thermostat / Timer to control your radiators. If you don't already have one, our WCT range provide you with everything you need for complete wireless control of your heating system:

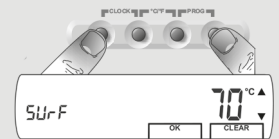


### WCT 100/TX

**KEY FEATURES:** Simple to Programme / Up to 6 temperature settings per day / 7 day clock / Advance mode / Holiday mode / Keylock mode / Economy mode / Boost Mode / Inbuilt room temperature sensor / Frost protection / Powered by 2 x 1.5v Alkaline batteries

#### **NEW - SURFACE TEMPERATURE SETTING FOR WCT 500 TX MODELS:**

Press the two buttons as shown until current surface temperature is display. Then adjust to required temperature using the arrow buttons.



### WCT 500/TX/STT/55

**KEY FEATURES:** Dedicated controller for 'Safe to Touch' range / Simple to Programme / **Surface Temperature control** / Up to 6 temperature settings per day / 7 day clock / Advance mode / Holiday mode / Keylock mode / Economy mode / Boost Mode / Inbuilt room temperature sensor / Frost protection / Powered by 2 x 1.5v Alkaline batteries



### WCT 500/TX/70

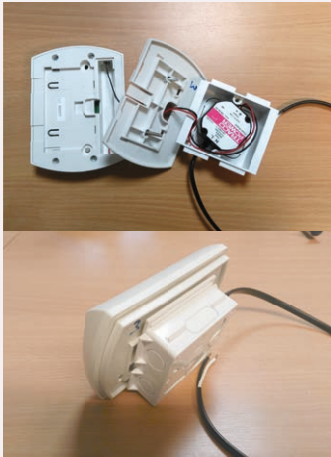
**KEY FEATURES:** Simple to Programme / **Surface Temperature control** / Up to 6 temperature settings per day / 7 day clock / Advance mode / Holiday mode / Keylock mode / Economy mode / Boost Mode / Inbuilt room temperature sensor / Frost protection / Powered by 2 x 1.5v Alkaline batteries



## WCT 500/TX/80 (Ceiling Range only)

**KEY FEATURES:** Simple to Programme / **Surface**

**Temperature control** / Up to 6 temperature settings per day / 7 day clock / Advance mode / Holiday mode / Keylock mode / Economy mode / Boost Mode / Inbuilt room temperature sensor / Frost protection / Powered by 2 x 1.5v Alkaline batteries



## MK1 230V Mains Kit

**KEY FEATURES:**

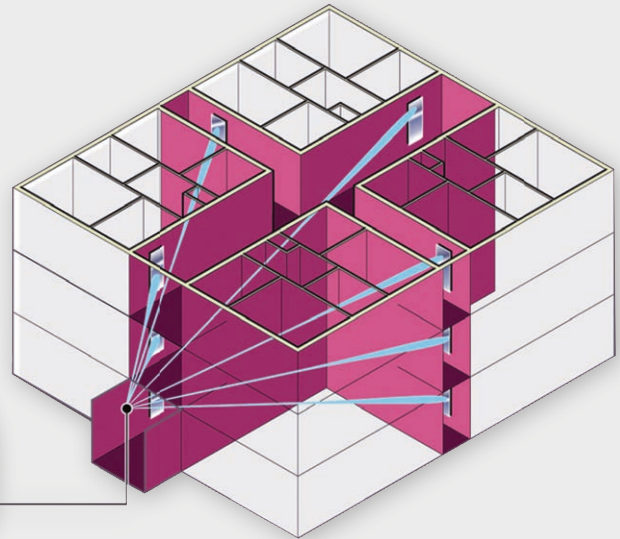
Mains powered, removing the need for Alkaline batteries / **Junction box not supplied.**

*For use on WCT100/TX, WCT500TX/70, WCT500TX/55*

## HOW THE SYSTEM WORKS

The TX control unit sends a 433MHz radio signal to each "registered" heater within a radius of 30 metres.

Each RX panel heater has an inbuilt receiver designed to respond to a signal from any WCT Controller.



**All local space heaters manufactured for sale in the EU after 1st January 2018 which use electricity, gaseous or liquid fuels, must comply with a minimum efficiency standard. This includes electric radiators, electric underfloor heating and electric and gas fires.**



**PROUDLY MANUFACTURED IN THE UK**

Sharrocks Street, Wolverhampton WV1 3RP

Tel: 01902 457575 Fax: 01902 457797 Email: [sales@ecolec.co.uk](mailto:sales@ecolec.co.uk) Website: [www.ecolec.co.uk](http://www.ecolec.co.uk)



Hereby, Ecolec Limited, declares that the radio equipment type thermostat and gateway are in compliance with Directive 2014/53/EU. The full text of the EU declaration of conformity is available at the following internet address:  
[www.ecolec.co.uk/support](http://www.ecolec.co.uk/support)

© Ecolec © Ecolec 1995-2018. All rights reserved  
Ecolec is a registered trademark of Ecolec Limited  
All specifications subject to change without notice



Product of the EU.



Proudly Manufactured in the UK.

Uniclass L7522	EPIC L22
CI/SfB (56.84)	X

**Lot 20  
compliant**



Wireless Heating Systems

## FITTING INSTRUCTIONS WCT100-500TX - 230V MAINS KIT



### READ THIS FIRST

This **ecolec** 'WCT100-500/TX' wireless thermostat has been specially adapted **for use without batteries** and is supplied with a 3.3VDC power supply. All details and instructions contained in the leaflet that accompanied the WCT100-500/TX are valid, with the exception of any reference to Section 1: batteries.

### INSTALLATION

This assembly should be installed by a qualified electrician.

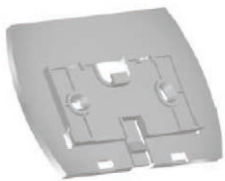
1. Install the Traco power supply. Installation instructions are included with the unit.
  2. Remove the lockable bracket from the WCT100-500/TX (see instructions below).
  3. Feed the 3.3VDC low voltage wires through the bracket.
  4. Screw the bracket to the back box.
  5. Connect the wires from the power supply to the terminal block in the back of the WCT100-500/TX. Red to Red, Black to Black.
  6. Carefully feed any slack red and black wires back into the back box, until the WCT100-500/TX can easily be clipped back into its correct position.
- During the process of establishing a wireless connection with one or more heaters it will be necessary to unclip the WCT100-500/TX from its bracket to gain access to the grey pairing button on the back. Care must be taken during this procedure so as not to pull or damage the wires that connect the power supply and the thermostat.

### IMPORTANT

Following power failure the program already entered will be retained, but please note that the current time and day of the week must be corrected once supply is restored, otherwise programmed operations will not be timed correctly.

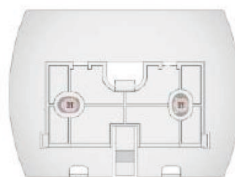
#### INSTALLATION INSTRUCTIONS FOR **Security Bracket** (For WCT Controllers)

**PLEASE RETAIN THIS LEAFLET**

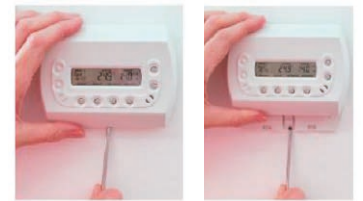


If you already have an existing WCT wall plate fitted please remove this and replace with the new security bracket. It uses the same fixing centres.

Otherwise place the security bracket in the correct position and mark through the screw holes on the rear (60mm centres). Drill and plug the wall to accept No. 6 or No. 8 screws and mount the security bracket. Clip the WCT onto it.

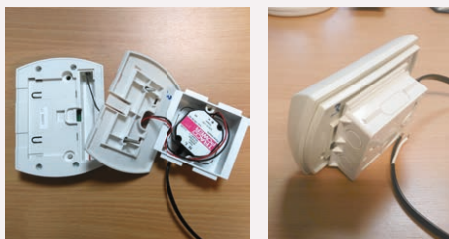


To remove the WCT from the security bracket use a flat bladed screw driver to release as shown below.



### WCT100TX

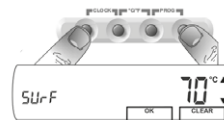
#### **MK1 230V Mains Kit**



### WCT500TX

#### **NEW FEATURES!**

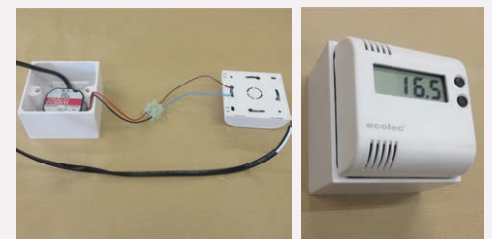
**SURFACE  
TEMPERATURE  
SETTING:**



WCT 500/TX/70

Press the two buttons as shown until current surface temperature is display. Then adjust to required temperature using the arrow buttons.

#### **MK1 230V Mains Kit**



Sharrocks Street, Wolverhampton WV1 3RP

Tel: **01902 457575** Fax: **01902 457797** Email: **sales@ecolec.co.uk** Website: **www.ecolec.co.uk**



Hereby, Ecolec Limited, declares that the radio equipment type thermostat and gateway are in compliance with Directive 2014/53/EU. The full text of the EU declaration of conformity is available at the following internet address:  
[www.ecolec.co.uk/support](http://www.ecolec.co.uk/support)

© Ecolec © Ecolec 1995-2018. All rights reserved  
Ecolec is a registered trademark of Ecolec Limited  
All specifications subject to change without notice



Product of the EU.



Proudly Manufactured in the UK.